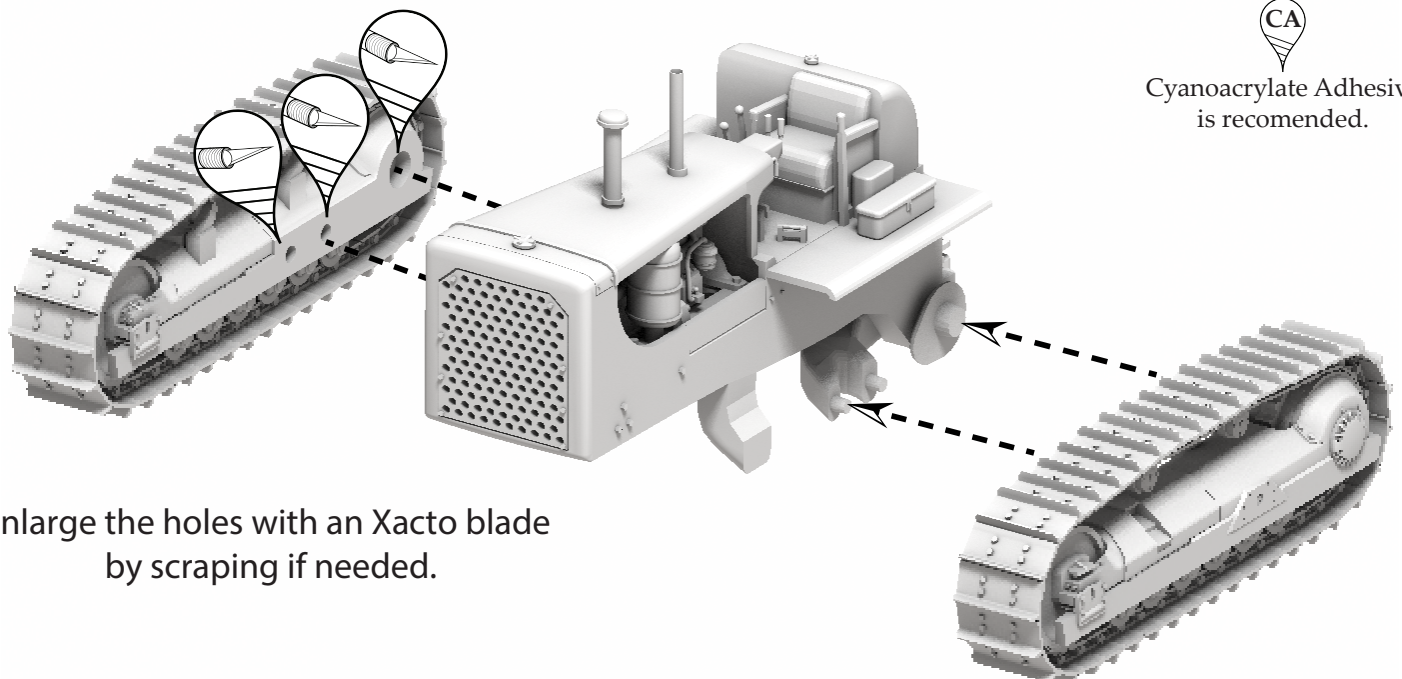
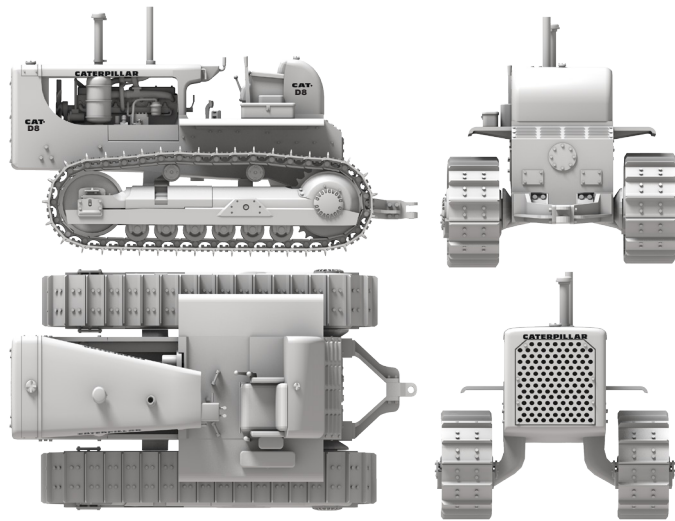


1958 Caterpillar D8

Thank you for purchasing our kit. We offer articles and video tutorials on our website that focus on the basics such as painting, assembly, and preparation of 3D printed items. Additionally, product spotlights and other interesting model railroad related articles and videos are available on our website.

Visit us at custommodeldepot.com

The 1958 Caterpillar D8 from Custom Model Depot is an accurate representation of the prototype, scaled to actual dimensions. The basic requirements for building the kit are 400 grit sandpaper, cyanoacrylate glue (super glue), and an Xacto Blade. Refer to the elevations for the placement of decals.




Cyanoacrylate Adhesive
is recommended.

Enlarge the holes with an Xacto blade
by scraping if needed.

 **WARNING:**
This kit is not a children's toy.
Not made for kids under 14 years old.

 **WARNING:**
CHOKING HAZARD
Not for small children